



FUJI MEDICAL CO., LTD.

Total production QTY of crimp cap for IV catheter **[PAT No.15902020]**

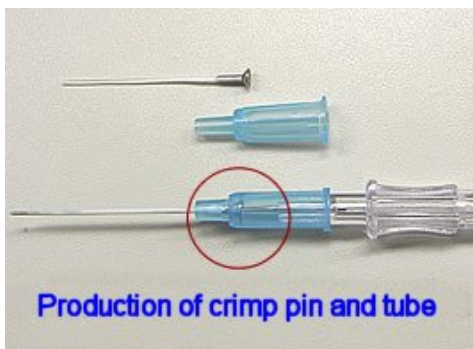
Achievements and reliability due to

3,000,000,000 pce. productions

FUJI MEDICAL CO.,LTD



Products



Introduction of development articles of medical field

- Crimp pin for IV catheter
- Disposable bone marrow needle
- Medical tubing
- Injection needle
- Catheter guide wire
- Other medical articles

Guide of activities

Actual achievement of 3,000,000,000 (Delivery QTY)

Fuji Medical is developing and manufacturing medical components such as stainless parts or Polyurethane tubing etc. and precision parts
Even if one defect it will affect a human life.

Therefore, we are producing, inspection and delivery carefully in the clean room (class 10,000), and we achieve 0 defect before shipment.

Furthermore, to improve usability, accuracy and quality we continue to research and develop constantly.

If you need the parts that require sterilization and clean room, please contact us.



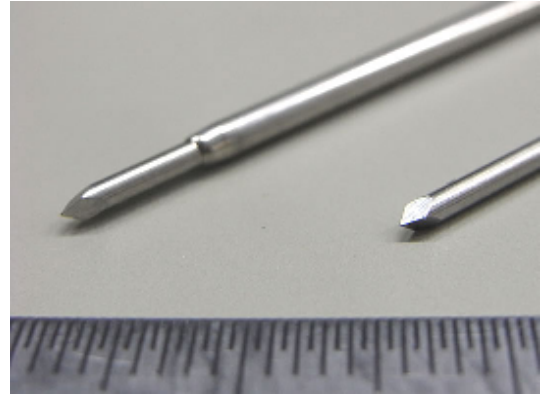
Product introduction

Medical Parts

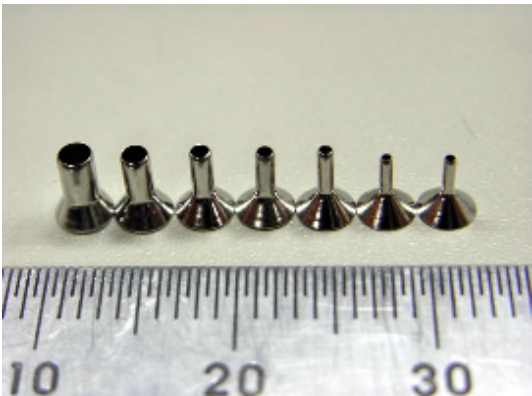
Fuji medical is specialty manufacturer of medical parts.



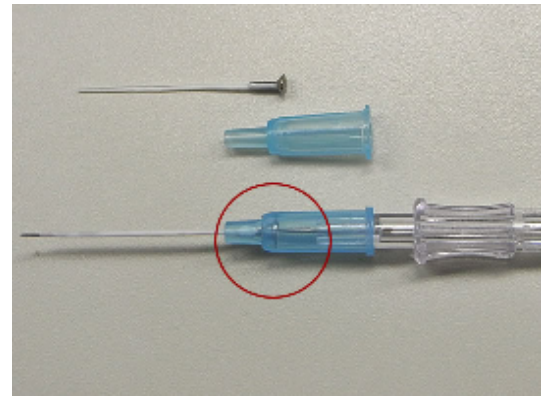
- Bone-marrow needle
- Bone marrow transplantation needle



- Closeup Photo of needle
- * Triangular pyramid



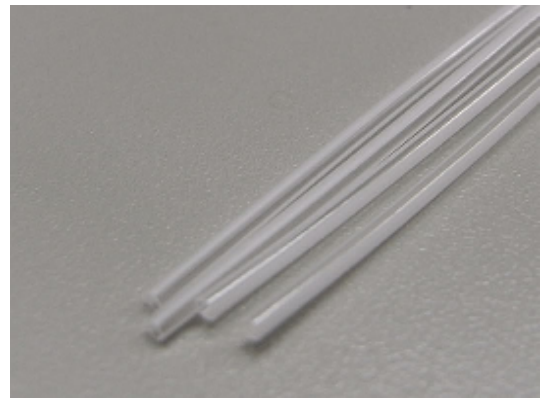
- Crimp pin
- 【Size】 14G~26G
 - 【Material】 Stainless steel (SUS)



- Crimp pin
- 【Size】 14G~26G
 - 【Material】 Stainless steel (SUS)



- Sheath crimp pin
- 【Size】 5Fr ~8Fr
 - 【Material】 Stainless steel (SUS)



- Polyurethane tubing
- * Easy to check blood flow due to stripe shape

Contact us

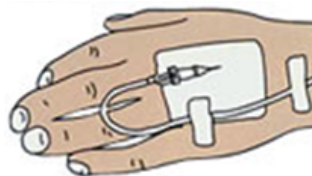
Work on research, development and quality control
to use IV cannulas and intravenous drips.

Tel: 81-90-9645-5482

Fax: 81-423-649-8511

Fuji Medical Co., Ltd.

Contact: Ichiro Yamashita



Corporate profile

Company policy

We take awareness and responsibility
for production of medical parts
We make corporate activity which always consider
the environmental conservation



Company profile

| | |
|------------------------------|--|
| Name | Kotobuki industries Co., Ltd. |
| President | Kaichi Matsuo |
| Head office | 41-22, Susukino-cho, Chuo-ku, Sagami-hara-shi, Kanagawa, 252-0213, Japan |
| Tel | +81-42-759-1711 |
| Fax | +81-42-756-4314 |
| Main products | Produce and Development of medical parts *Stainless parts *Polyurethane tube |
| Capital | JP ¥ 28,000,000.- |
| Date of Establishment | May, 1978 |
| Main Customer | Terumo Corporation, Nipro Corporation, Medikit Co., Ltd. Zeon Medical Inc., TOP Corporation. etc. |
| Export | China, Pakistan, Brazil, Korea |
| Supplier | Enomoto Co., Ltd., Shincotec Co., Ltd., ISC Co., Ltd. Saito Medical Industries Inc. etc. |
| affiliated company | Fuji Medical Co., Ltd. |
| Main Bank | the Shoko Chukin Bank Ltd., the Bank of Yokohama Ltd. |